

Product Technical Data Sheet:

Copper Tube Terminals & Associated Tooling

Description

Our high quality copper tube terminals are manufactured with an inspection window to enable a visual check prior to the crimping process, ensuring that the cable wire is correctly positioned inside the terminal.

The stud end is seamless and has been stamped closed, to minimise any potential moisture ingress.



Applications

Our Copper tube terminals are used by auto electricians, telecom engineers, and panel builders.

Specifications

Material:

High conductivity copper tube having an electroplated finish to BS 1872 with a 3μ nominal tin coating, to improve corrosion resistance and enhanced electrical conductivity. Copper to BS EN 1976:1998 specification with the purity measured at 99.9% and annealed to ASTM B111 C11000.

Operating Temperature:

The Copper tube terminals can operate up to 180°C

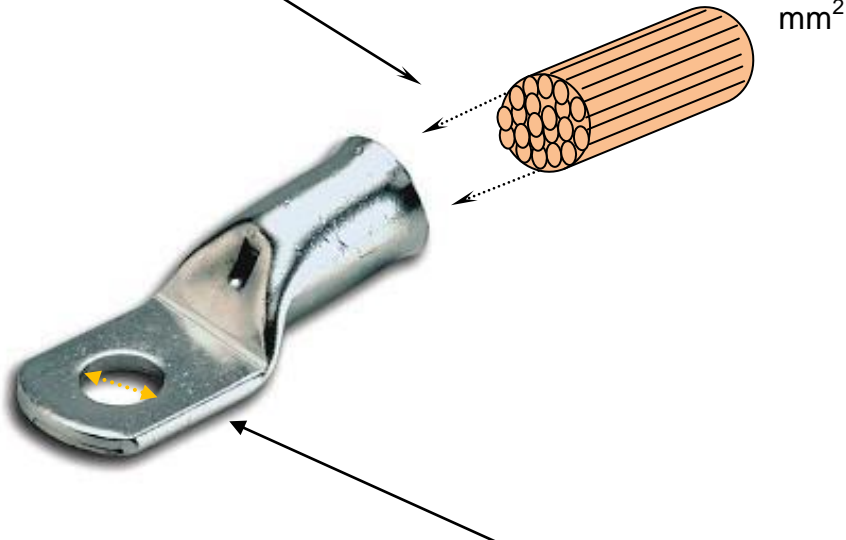
Dimensional:

The internal barrel diameters are manufactured to suit industry standard cables as defined by BS 6360, with various stud sizes available.

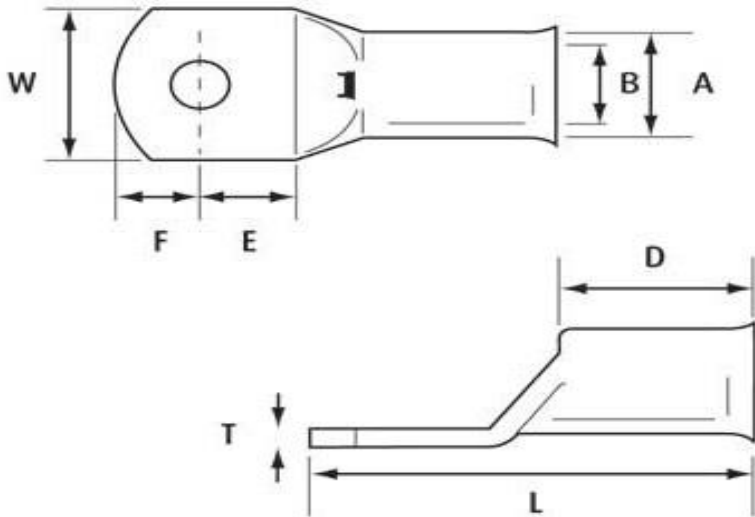
Features:

- Bell shaped entry to allow easier cable insertion on all sizes up to 240mm² a tapered edge is present on larger sizes.
- A full range of sizes are available from stock up to 400mm²
- (larger sizes can be requested from our sales team).

Cable cross-sectional area in mm²



Various sizes of Stud hole diameter in mm



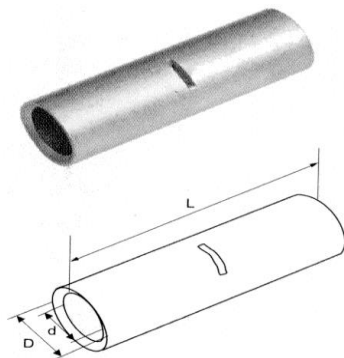
Partex ref Cable cross sectional area = 1.5mm² Stud hole diameter = 4mm

Col 1.5 4

Product ref	Barrel length mm	Palm width mm	Centre hole to edge mm	Palm length mm	Stud diameter mm	Hole ID mm ²	Hole OD mm	Total Length mm
	D	W	F	F + E	Hole	B	A	L
COL 1.5-4	8	8	4	9	4.2	1.8	3.7	19
COL 1.5-5	8	8	4	10	5.2	1.8	3.7	20
COL 2.5-4	8	8.7	4.5	10	4.5	2.4	4.0	20
COL 2.5-5	8	8.7	5.2	11	5.2	2.4	4.0	21
COL 2.5-6	8	10.3	6.2	13	6.2	2.4	4.0	23
COL 4-4	10	8.7	4.7	10	4.2	3.1	4.8	22
COL 4-5	10	8.7	5.2	11	5.2	3.1	4.8	23
COL 4-6	10	10.3	6.0	13	6.5	3.1	4.8	25
COL 4-8	10	12.5	8.0	17	8.2	3.1	4.8	29
COL 6-4	10	8.7	3.5	8	4.2	3.8	5.5	21
COL 6-5	10	10.3	4.5	10	5.2	3.8	5.5	23
COL 6-6	10	10.3	5	11	6.5	3.8	5.5	24
COL 6-8	10	12	5.9	13	8.4	3.8	5.5	26
COL 6-10	10	14	8.1	17	10.2	3.8	5.5	30
COL 10-5	10	10	5.1	12	5.2	4.5	6.2	25
COL 10-6	10	10	5.1	12	6.4	4.5	6.2	25
COL 10-8	10.5	12	7.1	15	8.4	4.5	6.2	29
COL 10-10	10.5	15	9.5	20	10.2	4.5	6.2	34
COL 10-12	10.5	17	12	25	13	4.5	6.2	39
COL 16-5	12	12	4.4	10	5.2	5.4	7.1	25
COL 16-6	12	12	5.2	11.5	6.4	5.4	7.1	27
COL 16-8	12	12.5	7.1	15	8.4	5.4	7.1	31
COL 16-10	12.5	15	8.0	18	10.4	5.4	7.1	36
COL 16-12	12.5	17	11	23	13	5.4	7.1	41
COL 25-5	12.5	13	6.5	13.5	5.2	7	8.8	30
COL 25-6	12.5	13	6.5	13.5	6.4	7	8.8	30
COL 25-8	12.5	14	7.1	15	8.4	7	8.8	32
COL 25-10	12.5	16	9	20	10.4	7	8.8	37
COL 25-12	12.5	18	10	24	13	7	8.8	41
COL 35-6	15	16	7.5	16	6.4	8.6	10.8	36
COL 35-8	15	16	7.5	16	8.4	8.6	10.8	36
COL 35-10	15	16	9	20	10.4	8.6	10.8	40
COL 35-12	15	18	11.5	24	13	8.6	10.8	44
COL 35-14	15	19.8	14	27	14.6	8.6	10.8	47
COL 35-16	15	23	16	29	17	8.6	10.8	49

COL 50-6	16	17.5	9.7	20	6.4	9.6	11.8	42
COL 50-8	16	17.5	10.1	20	8.4	9.6	11.8	42
COL 50-10	16	17.5	10	20	10.4	9.6	11.8	42
COL 50-12	16	17.5	9.5	20	13	9.6	11.8	42
COL 50-14	16	17.5	11.9	24	15	9.6	11.8	46
COL 50-16	16	24	14.5	30	17	9.6	11.8	52
COL 70-6	18	22	10.7	22	6.4	12	15	50
COL 70-8	18	22	10.7	22	8.4	12	15	50
COL 70-10	18	22	11	22	10.4	12	15	54
COL 70-12	18	22	10.5	22	13	12	15	54
COL 70-14	18	22	13.5	28	14.5	12	15	63
COL 70-16	18	22	14	29	17	12	15	63
COL 95-8	20	24.4	12.1	24	8.4	13.5	16.5	52
COL 95-10	20	24.4	12.1	24	10.4	13.5	16.5	52
COL 95-12	20	24.4	12.2	24	13	13.5	16.5	52
COL 95-14	20	24.4	14	28	15	13.5	16.5	56
COL 95-16	20	24.4	13.5	28	17	13.5	16.5	56
COL 120-8	22	27.8	11	23	8.4	15	19	55
COL 120-10	22	27.8	12.1	23	10.5	15	19	55
COL 120-12	22	27.8	11.4	23	13	15	19	55
COL 120-14	22	27.8	13	27	15	15	19	59
COL 120-16	22	27.8	13	27	17	15	19	59
COL 120-20	22	27.8	18	37	21	15	19	69
COL 150-8	27	30.7	13.5	27	8.4	16.5	21	64
COL 150-10	27	30.7	13.5	27	10.5	16.5	21	64
COL 150-12	27	30.7	13.5	27	13	16.5	21	64
COL 150-14	27	30.7	13.5	27	15	16.5	21	64
COL 150-16	27	30.7	13.0	27	17	16.5	21	64
COL 150-20	27	30.7	17	35	21	16.5	21	72
COL 185-10	27	33.5	14.2	29.5	10.5	19	23.1	67
COL 185-12	27	33.5	14.4	29.5	13	19	23.1	67
COL 185-14	27	33.5	14.4	29.5	15	19	23.1	67
COL 185-16	27	33.5	14.4	29.5	17	19	23.1	67
COL 185-20	27	33.5	18.5	37.5	21	19	23.1	75
COL 240-10	33	37.6	15.2	30	10.5	21	26	76
COL 240-12	33	37.6	15.4	30	13	21	26	76
COL 240-14	33	37.6	15	30	15	21	26	76
COL 240-16	33	37.6	14.7	30	17	21	26	76
COL 240-20	33	37.6	17.7	36	21	21	26	82
COL 300-10	42	44	18	37	10.5	24.5	30	95
COL 300-12	42	44	18	37	13	24.5	30	95
COL 300-14	42	44	18	37	15	24.5	30	95
COL 300-16	42	44	18	37	17	24.5	30	95
COL 300-20	42	44	18	37	21	24.5	30	95
COL 400-12	44	47.2	19.5	40	13	27	32.2	102
COL 400-14	44	47.2	19.5	40	15	27	32.2	102
COL 400-16	44	47.2	19.5	40	17	27	32.2	102
COL 400-20	44	47.2	19.5	40	21	27	32.2	102

Partex Copper Tube Butt Terminals



Product ref	Cable Size (mm) ²	Barrel ID d mm	Barrel OD D mm	Length L mm
COL 1.5 B	1.5	1.8	3.7	16
COL 2.5 B	2.5	2.3	3.9	20
COL 4 B	4	3	4.7	20
COL 6 B	6	4	5.9	20
COL 10 B	10	4.5	6.6	23
COL 16 B	16	5.5	7.5	30
COL 25 B	25	6.7	9.1	35
COL 35 B	35	8.6	11	40
COL 50 B	50	9.5	12.4	40
COL 70 B	70	12	15	45
COL 95 B	95	13.4	17	45
COL 120 B	120	15	19	50
COL 150 B	150	16.5	21.2	55
COL 185 B	185	19	23	60
COL 240 B	240	21	26.5	60
COL 300 B	300	24.5	30	70
COL 400 B	400	27	36.5	80

Associated Crimping Tools

CT 1.5-16 Hand Crimping Tool



- Ratchet crimping tool for smaller copper tube terminals.
- Suitable for volume use on terminals 1.5mm² to 6.0mm².
- Adjustable tensioner.
- Replaceable jaws.
- Ergonomically designed handles reduce operator fatigue.
- Length 22cm.
- Weight 0.5kg.

CT 10-16 Hand Crimping Tool



- Ratchet crimping tool specifically designed for crimping 10mm² and 16mm² copper tube terminals.
- Ideal for IEE specification earth bonding work.
- Adjustable tensioner.
- Ergonomically designed handles reduce operator fatigue.
- Length 24cm.
- Weight 0.5kg.

CT6-25 Hand Crimping Tool



- Ratchet crimping tool for crimping 6mm² to 25mm² copper tube terminals.
- Ergonomically designed handles reduce operator fatigue.
- Length 36cm.
- Weight 0.9kg.

CT 50 Heavy Duty Crimping Tool



- Tool for 6mm² to 50mm².
- Hexagonal crimping.
- Multiple rotating dies built in to head, easy to select correct size.
- Longer handles minimise the effort required to produce a perfect crimp.
- Length 39cm.
- Weight 1.1kg.

CT 10-95i Heavy Duty Crimping Tool



- Tool for 10mm² to 95mm².
- Indent crimping.
- Longer handles minimise the effort required to produce a perfect crimp.
- Length 57cm.
- Weight 2.9kg.

CT 120i Heavy Duty Crimping Tool



- Tool for 16mm² to 120mm² copper tube terminals.
- Indent crimping.
- Crimp size easily selected using screw adjustment.
- Extremely popular tool due to its extended size range.
- Length 64cm.
- Weight 3.5kg.

CT 120 Heavy Duty Crimping Tool



- Tool for 16mm² to 120mm² copper tube terminals.
- Hexagonal crimping with moveable and revolving dies.
- Extremely popular tool due to its extended size range.
- Length 62cm.
- Weight 4.2kg.

CT 150 Heavy Duty Crimping Tool



- Tool for 25mm² to 150mm² copper tube terminals.
- Hexagon crimping.
- Multiple rotating dies built in to head, easy to select correct size.
- Longer handles minimise the effort required to produce a perfect crimp.
- Length 65cm.
- Weight 2.9kg.

PHCT 240 KIT Heavy Duty Hydraulic Crimping Tool Kit



- Crimping tool kit for 10mm² to 240mm² copper tube terminals.
- Comes with a full set of interchangeable hexagonal dies: 10, 16, 25, 35, 50, 70, 95, 120, 150, and 240mm² and a robust carrying case.
- 5.2 tonnes output; 10-15mm ram stroke.
- Length 43cm (tool only).
- Weight 2.8kg (tool only).

PHCT 400 KIT Heavy Duty Hydraulic Crimping Tool Kit



- Crimping tool kit for 16mm² to 400mm² copper tube terminals.
- Comes complete with 12 pairs of interchangeable hexagonal dies: 16, 25, 35, 50, 70, 95, 120, 150, 185, 240, 300 and 400mm² and a robust carrying case.
- 12 tonnes output.
- 32mm jaw opening.
- Two stage, pumping action.
- Length 62cm (tool only).
- Weight 7kg (tool only).

For the full range of Partex tooling, please consult our latest catalogue.

Partex Marking Systems (UK) LTD.

61-64 Station Road, Coleshill, Birmingham B46 1JT

Tel: 01675 463670 Fax: 01675 463520

Email: sales@partex.co.uk