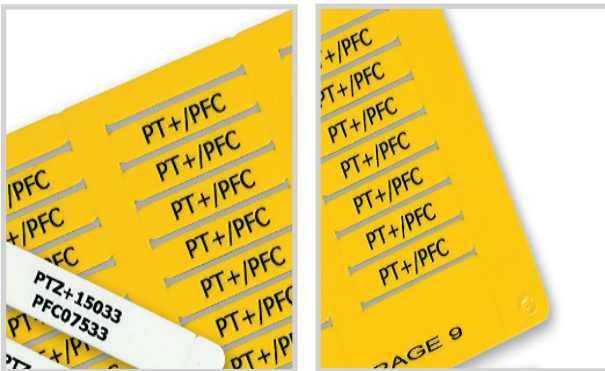




PFC-CARDS

CABLE-, WIRE- AND COMPONENT MARKING SYSTEM

- X-CARD is marking system in credit card format with easily detachable marker tags.
- Can be mounted in holders before or after connection of wire or cable. Certain card types directly mounted with cable ties.
- The cards are designated PFC and manufactured in halogen free ABS material.
- The PFC cards are printable with high volume production in printer MK3 also with colour printouts in international colour code.
- Produced on site with customized marking information and project information directly on the cards for easy sorting and random picking when mounted.



GENERAL INFORMATION

Design

The PFC cards are injection moulded and have the credit card size 54 x 86 mm. Different marker tag sizes depending on marking application easily detachable from card to be used with Partex different transparent holder systems type PT+, PTZ+, PTC, PTM, PM and PS.

Also included are card variants with adhesive labels for component marking, cable marker tags for direct mounting with cable ties and marker tags for standard push button marking on control panels.

Material

ABS or halogen free flame retardant PA11 Polyamid. For labels face stock is a 51 micron gloss radiant polyester with an Acrylic 20 micron adhesive. The liner is a densified kraft 81 micron.

Colours

White or yellow are standard.
For other colours, please contact Partex.

Printing equipment

Partex thermo transfer printer MK3 together with WinSign software forms a complete production system.

Advanced colour printout enables print in international colour code with various colour backgrounds and text colours and could be used for cable-, wire- and component marking.

Packaging

Delivered in cartons 25 cards per packaging. Can also be delivered ready printed from Partex as a fully customized M2 solution with fast deliveries.

Temperature range

For ABS and PA11 shape permanence from 30°C to +60° (-22°F to +140°F).
Storing temperature +20°C (+68°F).
For adhesive labels properties are defined at room temperature +22°C (72°F).
Temperature resistance in +149°C (300°F) for 24 hours and in -40°C (-40°F) for 3 days.
Humidity resistance 24 hours at 38°C (-40°C) and 100% relative humidity.

Resistance

The products are tested according to Partex Product Test Program SP2671 by the Swedish Test and Research Institute. Following applies to PFC:

- Resistance to UV radiation (corresponding to 1 year outdoors in south of Sweden).
- Chemical resistance fulfills SP2671.
- For the adhesive label variants material is UL recognized and CSA accepted.

For applications in hostile environments, please contact Partex for more information.

SIZES AND PACKAGING

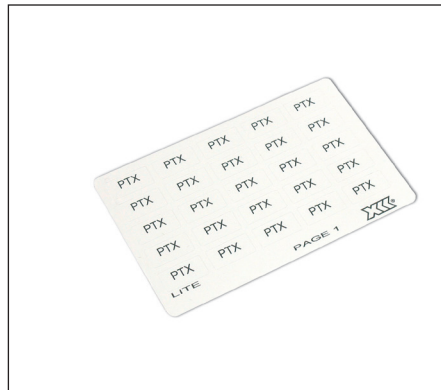
X-Card Article number	Marking application description	Marker tag / label Length x Height mm (inch)	Qty per card	Qty per box	X-Card material	Suitable partex holder system
PFC04212KA*	Marker tag - wire	12 X 4.2	21	525	ABS	PT+, PTZ+, PTC
PFC04215KA*	Marker tag - wire	15 X 4.2	21	525	ABS	PT+, PTZ+, PTC
PFC04218KA*	Marker tag - wire	18 X 4.2	21	525	ABS	PT+, PTZ+, PTM, PTC
PFC04221KA*	Marker tag - wire	21 X 4.2	21	525	ABS	PT+, PTZ+, PTM, PTC
PFC04230KA*	Marker tag - wire	30 X 4.2	14	350	ABS	PT+, PTZ+, PTM, PTC
PFC07533KA*	Marker tag - cable	33 X 7.5	9	225	ABS	PTZ+15/25/35
PFC09518KA*	Marker tag - component / cable	18 X 9.5	20	500	ABS	PM24, PS20T
PFC09540KA*	Marker tag- cable marking	40 X 9.5	8	200	Polyamid / PA1 1	Cable tie mounting
PFC09580KA*	Marker tag- cable marking	80 X 9.5	4	100	Polyamid / PA1 1	Cable tie mounting
PFC07014KA*	Label - component / terminal	14 X 7 (0.55 X 0.275)	25	625	Polyester	Direct marking
PFC12726KA*	Label - component / terminal	12.7 X 25.4 (0.5 X 1.0)	9	225	Polyester	Direct marking
PFC45080KA*	Label - component / terminal	45 X 80 (1.77 X 3.15)	1	25	Polyester	Direct marking
PFC15027KA*	Marker tag for push buttons	15 X 26 (0.590 X 1.023)	9	225	Polished PVC	Direct marking

*=Card colour 4=yellow, 9=white.

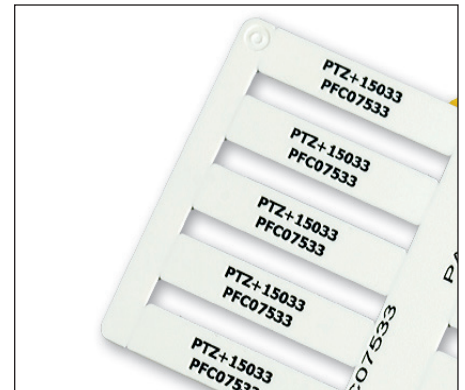
APPLICATION



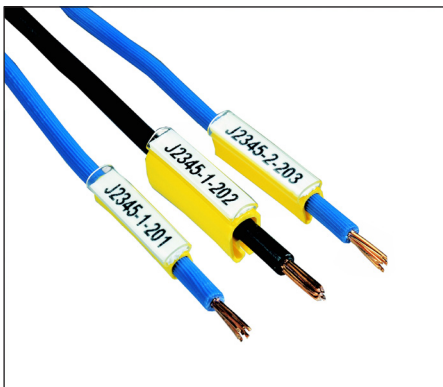
The X-Card system with MK3 marking machine connected to a computer.



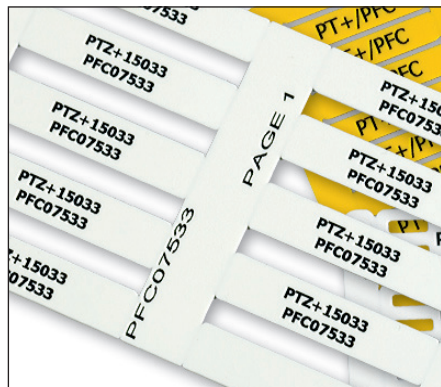
PFC component marking card with adhesive labels.



PFC component marking card for the PS holder system.



PFC and PTZ+ holders used for wire marking.



PFC wire marking card for PTZ+, PT+, PTC, PTM ETC.



PFC cable marker card for direct mounting with cable ties.