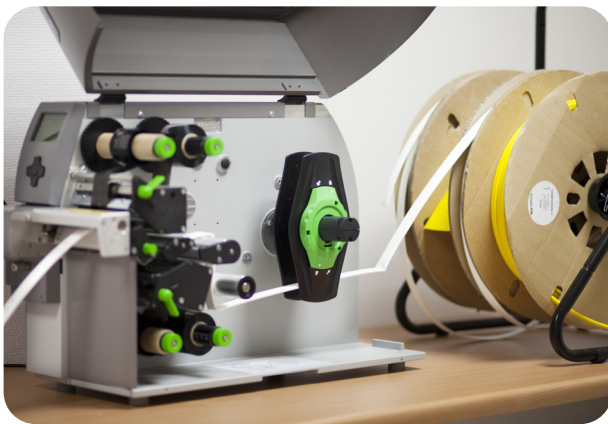




MK10-DH

THERMAL TRANSFER PRINTER

- Prints on both sides of the profile. Dual printing heads.
- Compact heavy duty printer for high demand production of wire, cable and component markings.
- Feeds, prints and cuts bulk Partex profiles.
- USB connection, controlled by Partex software Promark Creator.



General information

Design

MK10-DH is a modern thermal transfer printer for Partex profiles for all needs of wire and cable marking with high production speed (up to 125 mm/sec).

MK10 is connected to your computer with a USB cable and is controlled by Partex software Promark Creator.

It prints on both sides of the profile direct from reel and semi detaches the marker at wished lengths with the built in cutting unit.

In addition to PO-profile the MK10-DH prints on heat shrink tubing and Partex PP profile etc.

Technical information

Thermal transfer printing

300 dpi resolution

Printing speed

125 mm/s maximum

PC connection

USB 2.0 connection and Partex software

Rows

1 row in Tube-mode and 1-4 rows in Tape mode

PC connection

USB 2.0 and Partex software WinSign

USB memory and software WinSign

Power supply

100 ~ 240V (50-60Hz)

Power consumption: Max 300 W

CE-certified

Operation data

Operating temperatur: +10°C to +35°C

Humidity:30 - 85 % not condensing

To obtain the best printing result, the temperature of the profile shouldn't be lower then +25°C.

Product and ordering information

Article number	Info	Pack unit (MDQ)
Printer and accessories		
MK10-DH-KIT1	Printer MK10, Cutting unit, Software WinSign, 2 Ribbon (MK10-RB-BK510-40) and USB cable	1 pce
MK10-RB-BK2020-40*	Black Ribbon (Typ 2020), width 40mm (for PVC-and Zerex products.)	300m / Roll
MK10-RB-BK2020-60	Black Ribbon (Typ 2020), width 60mm (for PVC-and Zerex products.)	300m / Roll
MK10-RB-BK2020-80*	Black Ribbon (Typ 2020), width 80mm (for PVC-and Zerex products.)	300m / Roll
MK10-RB-BK2020-100	Black Ribbon (Typ 2020), width 100mm (for PVC-and Zerex products.)	300m / Roll
MK10-RB-BK510-40	Black Ribbon (Typ 510), width 40mm (for PVC-and Zerex products.)	300m / Roll
MK10-RB-BK510-55	Black Ribbon (Typ 510), width 55mm (for PVC-and Zerex products.)	300m / Roll
MK10-RB-BK510-83	Black Ribbon (Typ 510), width 83mm (for PVC-and Zerex products.)	300m / Roll
MK10-RB-BK510-110	Black Ribbon (Typ 510), width 110mm (for PVC-and Zerex products.)	300m / Roll
MK10-RB-BKFTIM-110	Black Ribbon (FTIM), width 110mm (for EPF)	300m / Roll
MK10-RB-BKHT-70	Black Ribbon (HT), width 70mm (for ET, EF)	300m / Roll
MK10-CU	Cutting unit (Included in MK10-KIT1)	1 pce
MK-RS	Reel stand	1 pce
MK-RS3	Reel stand	1 pce
	*=standard size	
Cabinet and Component markers		
PP+04600SN*	PP+profil H=4,6 mm, for PT+, PTC, PTM10 and PM-10 (also fits Wagons TopJobs terminal blocks)	17m / Roll
PP+04600DN*	PP+profil H=4,6 mm, for PT+, PTC, PTM10 and PM-10 (also fits Wagons TopJobs terminal blocks)	50m / Roll
PP+06300SN*	PP+profil H=6,3 mm, for Phoenix plintar (UT2,5, UTTB2,5, ST4, DT2,5, QTC, DTI2,5)	17m / Roll
PP+06300DN*	PP+profil H=6,3 mm, for Phoenix plintar (UT2,5, UTTB2,5, ST4, DT2,5, QTC, DTI2,5)	50m / Roll
PP+09000SN*	PP+profil H=9,0 mm, for PTM20 and PM-20	17m / Roll
PP+09000DN*	PP+profil H=9,0 mm, for PTM20 and PM-20	50m / Roll
PP+10000SN*	PP+profil H=10,2 mm, for Entrelecs terminal blocks	17m / Roll
PP+10000DN*	PP+profil H=10,2 mm, for Entrelecs terminal blocks	50m / Roll
PP+11000SN*	PP+profil H=11,0 mm, for Wagos TopJobs terminal blocks	17m / Roll
PP+11000DN*	PP+profil H=11,0 mm, for Wagos TopJobs terminal blocks	50m / Roll
PPA+09000SN*	PP+profil with adhesive for component markers etc. H=9,0 mm	10m / Roll
PPA+09000DN*	PP+profil with adhesive for component markers etc. H=9,0 mm	25m / Roll
	*= 4:yellow, 9:white	
Heat Shrink Tubing		
PHZ20032BN*	Heat Shrink , Diam 3.2mm, shrink ration 2:1, Zerex	100m / Reel
PHZ20048BN*	Heat Shrink , Diam 4.8mm, shrink ration 2:1, Zerex	100m / Reel
PHZ20064BN*	Heat Shrink , Diam 6.4mm, shrink ration 2:1, Zerex	75m / Reel
PHZ20095BN*	Heat Shrink , Diam 9.5mm, shrink ration 2:1, Zerex	75m / Reel
PHZ20127BN*	Heat Shrink , Diam 12.7mm, shrink ration 2:1, Zerex	50m / Reel
PHZF20024BN*	Flat Heat Shrink , Diam 2,4 mm, shrink ration 2:1, Zerex	100m / Reel
PHZF20032BN*	Flat Heat Shrink , Diam 3,2 mm, shrink ration 2:1, Zerex	100m / Reel
PHZF20048BN*	Flat Heat Shrink , Diam 4,8 mm, shrink ration 2:1, Zerex	100m / Reel
PHZF20064BN*	Flat Heat Shrink , Diam 6,4 mm, shrink ration 2:1, Zerex	100m / Reel
PHZF20095BN*	Flat Heat Shrink , Diam 9,5 mm, shrink ration 2:1, Zerex	100m / Reel
PHZF20127BN*	Flat Heat Shrink , Diam 12,7 mm, shrink ration 2:1, Zerex	100m / Reel
PHZF20191BN*	Flat Heat Shrink , Diam 19,1mm, shrink ration 2:1, Zerex	50m / Reel
PHZF20254BN*	Flat Heat Shrink , Diam 25,4mm, shrink ration 2:1, Zerex	50m / Reel
PHZF20381BN*	Flat Heat Shrink , Diam 38,1mm, shrink ration 2:1, Zerex	25m / Reel
PHZF20504BN*	Flat Heat Shrink , Diam 50,4mm, shrink ration 2:1, Zerex	25m / Reel
	*= 4:yellow, 9:white	

PO-profile		
PO-01000SN*	PO-profile 0,25mm ² . Diam 1,3-1,8mm	6,0m / SN-reel
PO-01000DN*	PO-profile 0,25mm ² . Diam 1,3-1,8mm	60,0m / DN-reel
PO-01000BN*	PO-profile 0,25mm ² . Diam 1,3-1,8mm	250,0 / BN-reel
PO-02000SN*	PO-profile 0,5mm ² . Diam 1,7-2,2mm	5,0m / SN-reel
PO-02000DN*	PO-profile 0,5mm ² . Diam 1,7-2,2mm	60,0m / DN-reel
PO-02000BN*	PO-profile 0,5mm ² . Diam 1,7-2,2mm	250,0 / BN-reel
PO-03000SN*	PO-profile 0,75mm ² Diam 2,0-2,5mm	4,5m / SN-reel
PO-03000DN*	PO-profile 0,75mm ² Diam 2,0-2,5mm	50,0m / DN-reel
PO-03000BN*	PO-profile 0,75mm ² Diam 2,0-2,5mm	250,0 / BN-reel
PO-04000SN*	PO-profile 1,0mm ² Diam 2,2-2,8mm	4,5m / SN-reel
PO-04000DN*	PO-profile 1,0mm ² Diam 2,2-2,8mm	50,0m / DN-reel
PO-04000BN*	PO-profile 1,0mm ² Diam 2,2-2,8mm	200,0 / BN-reel
PO-05000SN*	PO-profile 1,5mm ² Diam 2,7-3,5mm	4,0m / SN-reel
PO-05000DN*	PO-profile 1,5mm ² Diam 2,7-3,5mm	40,0m / DN-reel
PO-05000BN*	PO-profile 1,5mm ² Diam 2,7-3,5mm	200,0 / BN-reel
PO-06000SN*	PO-profile 2,5mm ² Diam 3,2-4,0mm	3,5m / SN-reel
PO-06000DN*	PO-profile 2,5mm ² Diam 3,2-4,0mm	40,0m / DN-reel
PO-06000BN*	PO-profile 2,5mm ² Diam 3,2-4,0mm	200,0 / BN-reel
PO-068TWBN*	PO-068TW profile with thin wall Diam 6.8-7.0 mm	50,0m / reel
PO-068TWDN*	PO-068TW profile with thin wall Diam 6.8-7.0 mm	25,0m / DN-reel
PO-068TWSN*	PO-068TW profile with thin wall Diam 6.8-7.0 mm	4,5m / SN-reel
PO-068Q10BN*	PO-068Q punched, 10mm between punched holes	50,0m / reel
PO-068Q10DN*	PO-068Q punched, 10mm between punched holes	25,0m / DN-reel
PO-07000SN*	PO-profile 4,0mm ² Diam 3,8-4,7mm	3,5m / SN-reel
PO-07000DN*	PO-profile 4,0mm ² Diam 3,8-4,7mm	30,0m / DN-reel
PO-07000BN*	PO-profile 4,0mm ² Diam 3,8-4,7mm	100,0m / BN-reel
PO-08000SN*	PO-profile 6,0mm ² Diam 4,6-5,5mm	3,0m / SN-reel
PO-08000DN*	PO-profile 6,0mm ² Diam 4,6-5,5mm	30,0m / DN-reel
PO-08000BN*	PO-profile 6,0mm ² Diam 4,6-5,5mm	100,0m / BN-reel
POZ01000KN*	POZ-profile Zerex 0,25mm ² , Diam 1,3-1,8mm	250m / box
POZ02000KN*	POZ-profile Zerex 0,5mm ² , Diam, 1,7-2,2mm	250m / box
POZ03000KN*	POZ-profile Zerex 0,75mm ² Diam 2,0-2,5mm	250m / box
POZ04000KN*	POZ-profile Zerex 1,0mm ² Diam 2,2-2,8mm	200m / box
POZ05000KN*	POZ-profile Zerex 1,5mm ² Diam 2,7-3,5mm	200m / box
POZ06000KN*	POZ-profile Zerex 2,5mm ² Diam 3,2-4,0mm	200m / box
POZ07000KN*	POZ-profile Zerex 4,0mm ² Diam 3,8-4,7mm	100m / box
POZ08000KN*	POZ-profile Zerex 6,0mm ² , Diam, 4,6-5,5mm *= 4:yellow, 9:white	100m / box
Cable markers		
PKZ20DN*	PKZ 2 profile Zerex	20m / Reel
PKZ20KN*	PKZ 2 profile Zerex	100m / Carton
PKZ20QKN*	PKZ20 profile punched, 10mm between the punched holes, Zerex	100m / Carton
PKZ20Q10DN*	PKZ 2 profile punched, 10mm between punched holes, Zerex	20m / Reel
PO-068TWBN*	PO-068TW profile with thin wall Diam 6.8-7.0 mm	50m / Reel
PO-068QBN*	PO-068Q profile punched, 10mm between the punched holes	40m / Reel
PPQ+10040DN*	Flat profile, W: 10mm L: 40mm	20m / Reel
PPQ+10060DN*	Flat profile, W: 10mm L: 60mm	20m / Reel
PPQ+10080DN*	Flat profile, W: 10mm L: 80mm	20m / Reel
PPQ+19040DN*	Flat profile, W: 19mm L: 40mm	20m / Reel
PPQ+19060DN*	Flat profile, W: 19mm L: 60mm	20m / Reel
PPQ+19080DN*	Flat profile, W: 19mm L: 80mm	20m / Reel
PPQ+38060DN*	Flat profile, W: 38mm L: 60mm	20m / Reel
PPQ+38080DN*	Flat profile, W: 38mm L: 80mm	20m / Reel
PPQ+38100DN*	Flat profile, W: 38mm L: 1000mm *=4:yellow, 9:white	20m / Reel

Recommendation, ribbons for partex profile

PRODUCT	RIBBON	MK10-RB-BK2020	MK10-RB-BK510
PO			X
POZ		X	X
PP+		X	X
PPQ			X
PKZ		X	X
PHZ/PHZF		X	

Recommendation, ribbons for prosleeve

PRODUCT	RIBBON	MK10-RB-BK2020	MK10-RB-BK510	MK10-RB-BKHT-70
CMZ			X	
CML		X		
CMT			X	X
CMD		X		
CMM		X		
EPL			X	
EPF		X		
SG		X		
HF		X		
MS		X		
ET				X
NF		X		
EF		X		